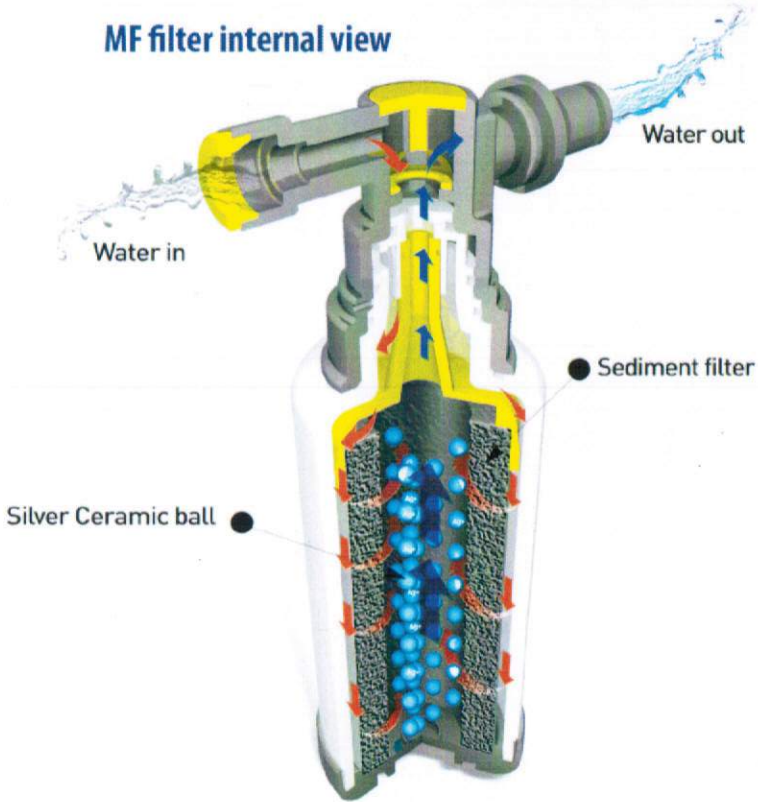
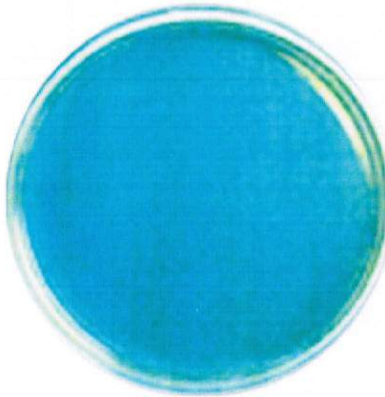


Benefits of Coway MF filter explained

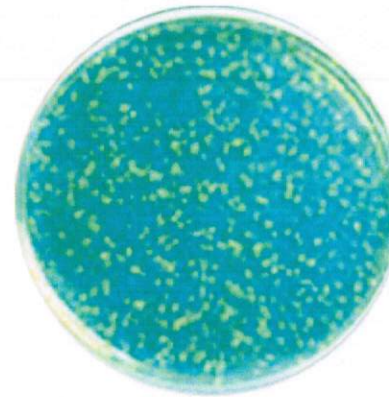
MF filter internal view



As the water travels through the filter on its way to wash and clean you, it passes first through the sediment filter. This removes any suspended particles that may build up inside the Bidet water galleries. The water then passes through the silver ceramic balls picking up silver ions that attack any bacteria and germs that can be living on the nozzles or in the warm water generated by the Bidet.



Bacteria growth with filter



Bacteria growth without filter



Certified test report

Changing the filter is just like changing a light bulb.

To remove: Simply grasp filter in hand, turn 1/4 clockwise

To replace: Put filter into holder and turn 1/4 anti-clockwise

